



**mazda**

## All-New Mazda2 Preview



*MAZDA ZOOM!*





# Press play

The All-New Mazda2 is ready and waiting, alive with attitude, eager for fun. So what are you waiting for? It's time to have some fun! New Mazda2: Now that's Zoom-Zoom!

# Feedback

All-New Mazda2 is raring to go. Show it a curve and it springs to life, with crisp, precise responses to everything you ask of it. And it also answers back, with a balanced chassis that you can feel working through the tips of your fingers.

Chassis engineers call it feedback: we call it talking your language!









# Control

All-New Mazda2 is lean and mean. Those striking, aerodynamic curves conceal a lightweight and immensely strong bodyshell. And, as any race-car engineer will tell you, reducing weight and increasing rigidity means enhanced dynamic ability, extra safety and better fuel economy. Simply put: less weight equals more go!



# Connectivity

All-New Mazda2 is focused around you. From the first time you slide into the carefully sculpted seats, you'll feel at one with your surroundings. More an interface than an interior, everything you can see and touch is designed to help you interact more effectively with the car. Go ahead: make the connection.





# Specification.

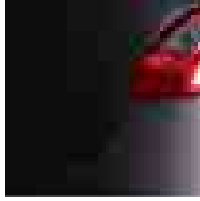
Technical Data*	1.3 I MZR Petrol	1.3 I MZR Petrol	1.5 I MZR Petrol
Displacement (cc)	1349	1349	1498
Maximum output [ps (kW) / rpm]	75 (55) / 6000	84 (62) / 6000	103 (76) / 6000
Maximum torque (Nm / rpm)	118 / 3500	121 / 3500	136 / 4000
Transmission	5-speed manual	5-speed manual	5-speed manual
Fuel consumption <sup>1)</sup> [mpg (l/100km)]	52.3 (5.4)	52.3 (5.4)	TBC
CO <sub>2</sub> emissions <sup>1)</sup> (g/km)	129	129	TBC

<sup>1)</sup>Fuel consumption value according to 80/1268 EWG (1999/100/EC)

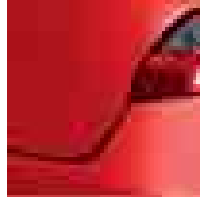
Standard and Optional Equipment*	TS	TS <sup>2</sup>	Sport
Sports Styling Kit	–	–	●
15" steel wheels	●	–	–
15" alloy wheels	–	●	–
16" alloy wheels	–	–	●
Electric front windows	●	●	●
Electric rear windows	–	–	●
Electric folding and heated door mirrors	–	●	●
Rain sensor and Auto headlights	–	–	●
Remote central locking with deadlocking and jack-knife key	●	●	●
Dynamic Stability Control (DSC)	○	○	●
EPAS steering assist	●	●	●
Side and curtain airbags	–	●	●
Two ISOFIX brackets in rear seats	●	●	●
Illuminated entry	●	●	●
Single CD with AUX jack	●	●	●
Manual air conditioning	○	●	–
Climate control air conditioning	–	–	●
Cruise control	–	–	●
Trip computer including adjustable speed alarm	–	–	●
Leather steering wheel and shift knob	–	●	●
Multifunction glovebox with magazine rack	●	●	●
60/40 rear bench	●	●	●

● = Standard, ○ = Option, at extra cost.

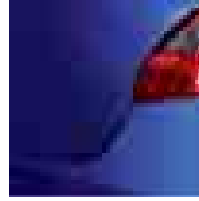
\*All technical data, standard equipment and options are preliminary and may change up until launch.



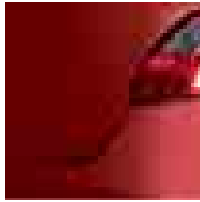
Brilliant Black



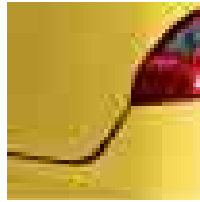
True Red



Aurora Blue Mica



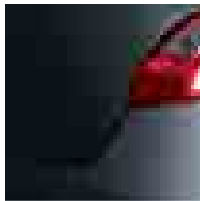
Golden Red Mica



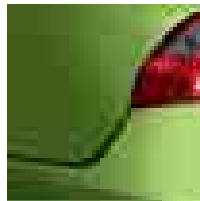
Golden Yellow  
Metallic



Icy Blue Metallic



Metropolitan Grey  
Mica



Spirited Green  
Metallic



Sunlight Silver  
Metallic

# Select

All-New Mazda2 is available in bold colour combinations designed to make an already stunning shape stand out even more.



Images in this brochure are of a European pre-production model. The design features and technical data of the final version may differ and some of the features may be optional or unavailable. Information may change prior to going on sale. Colour samples shown in this brochure may vary from the actual colours because of the limitations of the printing process. For more information on the All-New Mazda2, please contact your Mazda dealer.

March 2007.

Part No. MCAG861 BJN 303825

**Your Mazda dealer:**

**Internet: [www.mazda.co.uk](http://www.mazda.co.uk)  
Mazda Helpline 08457 48 48 48**